

Installing SQL Server

To practice all materials from the book and run all code samples you can use any edition of SQL Server 2008 except SQL Server Compact, which doesn't have full-fledged T-SQL support like the other editions. Assuming that you don't already have an instance of SQL Server to connect to, the following sections describe where you can obtain SQL Server and how to install it.

1. Obtain SQL Server

As I mentioned, you can use any edition of SQL Server 2008 except SQL Server Compact to practice the materials from the book. If you have a subscription to MSDN, you can use the SQL Server 2008 Developer for learning purposes. You can download it from <http://msdn.microsoft.com/en-us/sqlserver/default.aspx>. Otherwise, you can use SQL Server 2008 Enterprise 180-day evaluation, free trial software that you can download from <http://www.microsoft.com/sqlserver/2008/en/us/trial-software.aspx>. In this appendix, I demonstrate the installation of SQL Server 2008 Enterprise 180-day evaluation.

2. Create a User Account

Prior to installing SQL Server, you need to create a user account that you will later use as the service account for SQL Server services.

To create a user account:

1. Right-click My Computer (or Computer in some operating systems) and choose Manage to open the Computer Management snap-in.
2. Navigate to Computer Management (Local) | System Tools | Local Users and Groups | Users.
3. Right-click the Users folder and choose New User.
4. Fill in the details for the new user account in the New User dialog box as shown in [Figure A-1](#).

Figure A-1. The New User dialog box

The screenshot shows the 'New User' dialog box with the following fields and options:

- User name: SQL
- Full name: SQL Server Services Account
- Description: Account for SQL Server services
- Password: [masked]
- Confirm password: [masked]
- User must change password at next logon
- User cannot change password
- Password never expires
- Account is disabled

Buttons: Create, Close

- 4-1. Type a user name (for example, **SQL**), optionally a full name (for example, **SQL Server Services Account**), optionally a description (for example, **Account for SQL Server services**), and a secure password, and then confirm the password.
- 4-2. Clear the User Must Change Password At Next Logon check box.
- 4-3. Select the User Cannot Change Password and Password Never Expires check boxes.
- 4-4. Click Create to create the new user account.

3. Install Prerequisites

At this point you can start the setup.exe program from the SQL Server installation CD or folder. Before installing SQL Server, the setup program checks whether all the prerequisites are already installed. The prerequisites include the Microsoft .NET Framework and updated Windows Installer. If the setup program doesn't find the prerequisites, it will install those first, and when they are installed, you may be required to restart the computer and rerun the setup program.

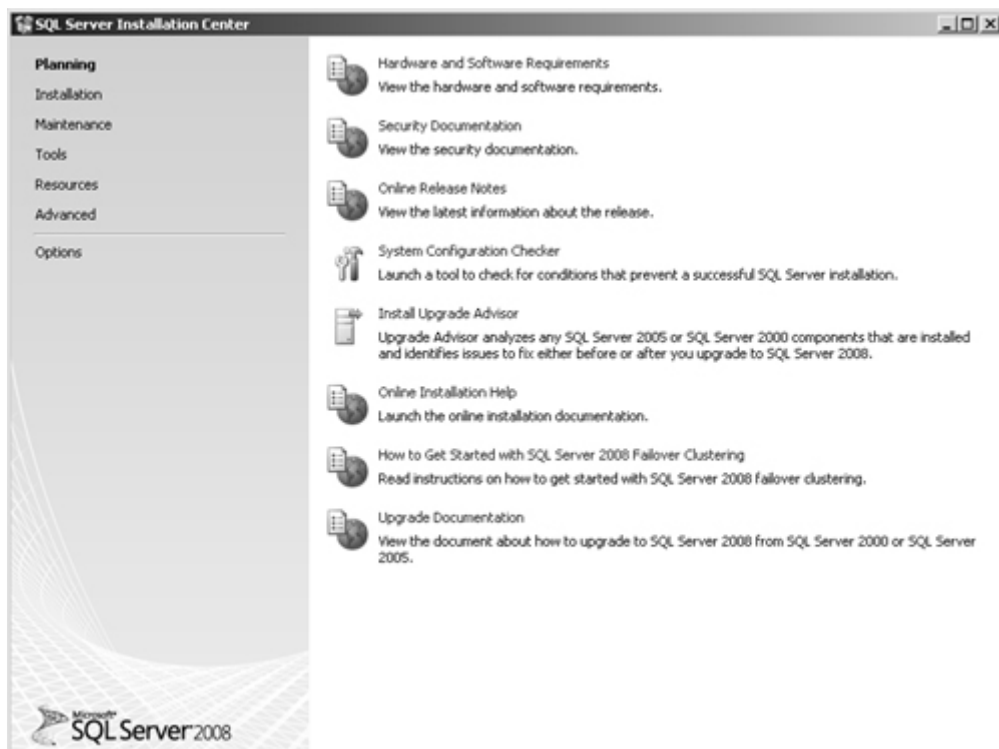
4. Install the Database Engine, Documentation, and Tools

Once all prerequisites are installed, you can move on to installing the actual product.

To install the database engine, documentation, and tools:

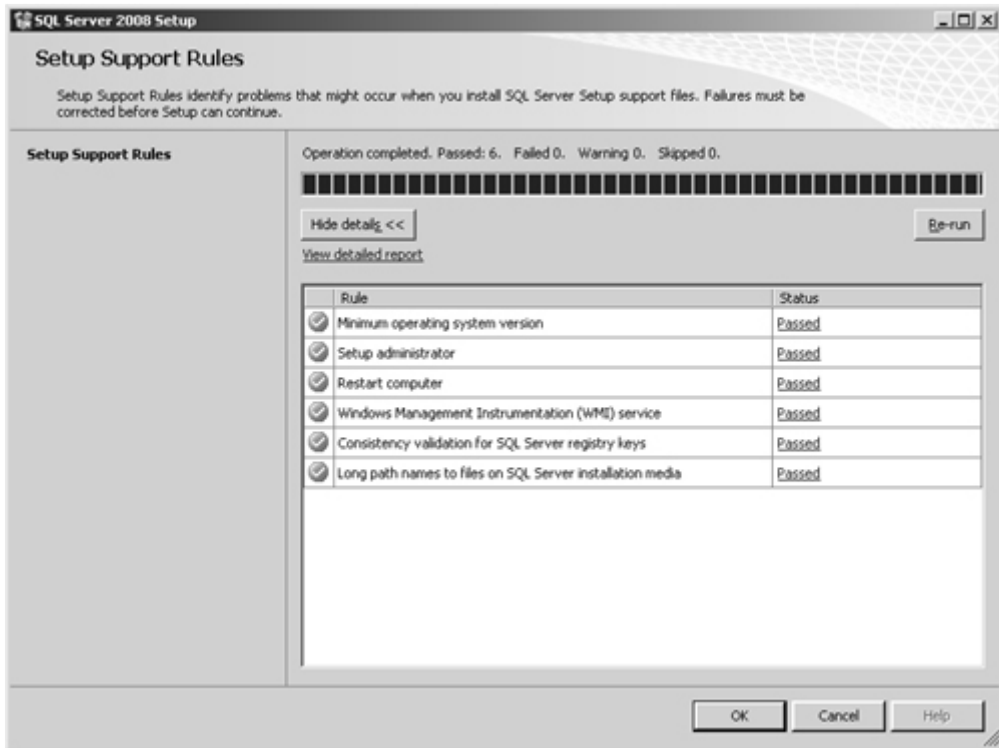
1. After all prerequisites are installed, run the setup.exe program. You should see the SQL Server Installation Center dialog box shown in [Figure A-2](#).

Figure A-2. SQL Server Installation Center



2. From the left pane, choose Installation. Note that the screen changes.
3. From the right pane, choose New SQL Server Stand-Alone Installation Or Add Features To An Existing Installation. The Setup Support Rules dialog box appears.
4. Click Show Details to view the status of the setup support rules as shown in [Figure A-3](#), and ensure that no problems are indicated.

Figure A-3. The Setup Support Rules dialog box



5. When done, click OK to continue. The Product Key dialog box appears as shown in Figure A-4.

Figure A-4. The Product Key dialog box



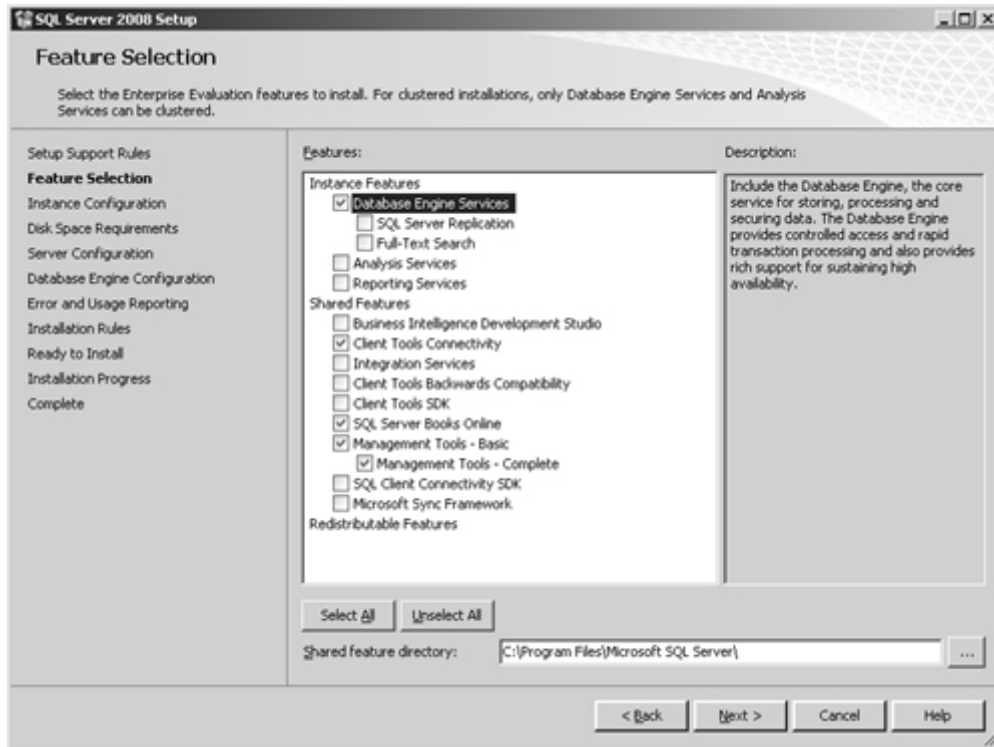
Note that in certain circumstances the dialog boxes Setup Support Files and Setup Support Rules described in steps 7-9 may appear before the Product Key dialog box. If they do, simply follow the instructions in steps 7-9 now instead of later.

6. Make sure that under the option Specify a Free Edition, Enterprise Evaluation is chosen and click Next

to continue. The License Terms dialog box appears.

7. Confirm that you accept the license terms and click Next to continue. The Setup Support Files dialog box appears.
8. Click Install to continue. The Setup Support Rules dialog box appears again.
9. Click Show Details to view the status of the setup support rules and ensure that no problems are indicated. Click Next to continue. The Feature Selection dialog box appears. Select the features to install as shown in [Figure A-5](#).

Figure A-5. The Feature Selection dialog box



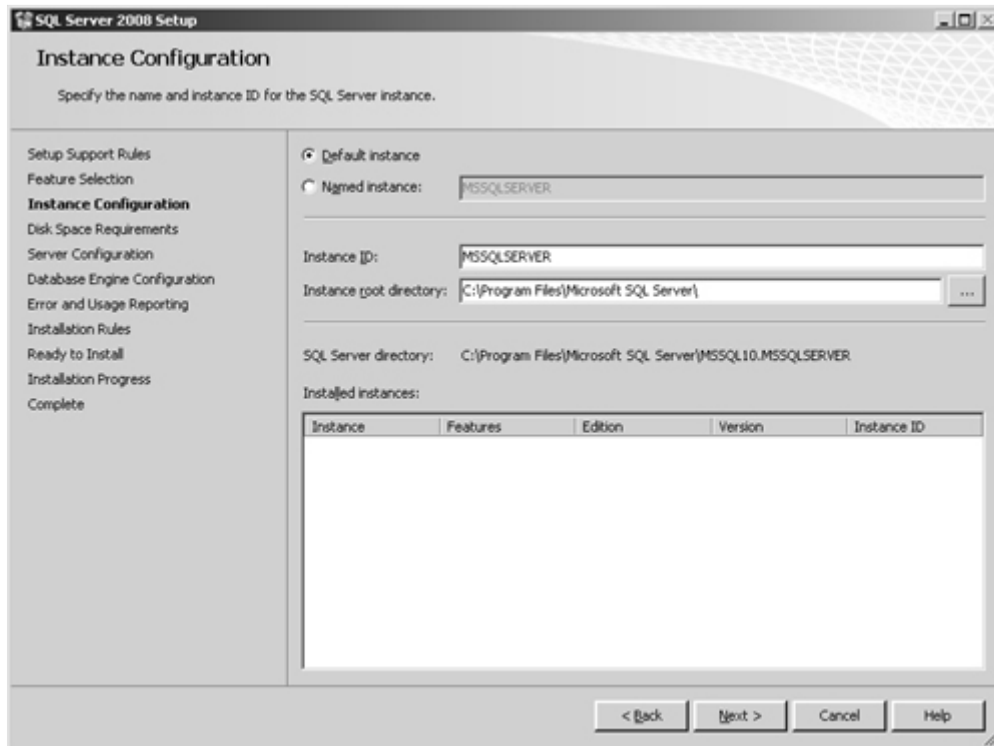
Select the following features:

- Database Engine Services
- Client Tools Connectivity
- SQL Server Books Online
- Management Tools - Complete

For the purposes of this book you don't need any of the other features.

When done, click Next to continue. The Instance Configuration dialog box appears as shown in [Figure A-6](#).

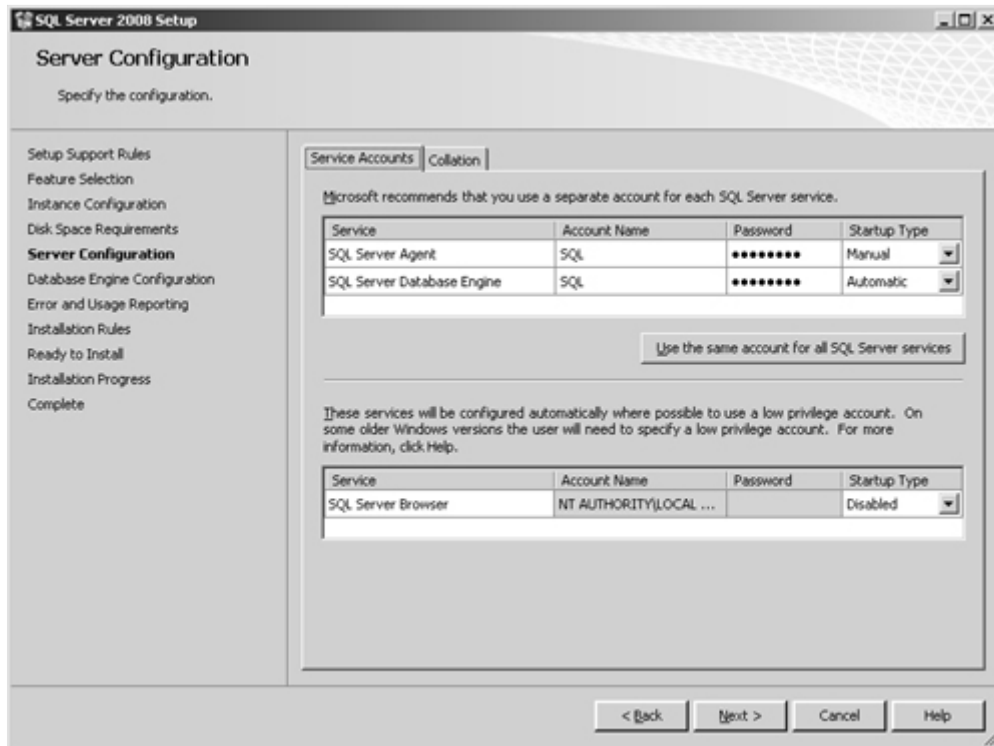
Figure A-6. The Instance Configuration dialog box



If you are not familiar with the concept of SQL Server instances, you can find details in [Chapter 1, "Background to T-SQL Querying and Programming,"](#) in the section "[SQL Server Architecture.](#)"

10. If a default instance of SQL Server is not installed in the computer and you would like to configure the new instance as the default, simply confirm that the option Default Instance is selected. If you want to configure the new instance as a named instance, make sure the option Named Instance is selected and specify a name for the new instance (for example, SQL08). When you later connect to SQL Server you will specify only the computer name for a default instance (for example, QUANTUM), and the computer name\instance name for a named instance (for example, QUANTUM\SQL08).
11. When you're done, click Next to continue. The Disk Space Requirements dialog box appears. Make sure that you have enough disk space for the installation as required.
12. Click Next to continue. The Server Configuration dialog box appears.
13. As shown in [Figure A-7](#), for the service account for the SQL Server Agent and SQL Server Database Engine services, specify the user name and password of the user account you created earlier.

Figure A-7. The Server Configuration dialog box

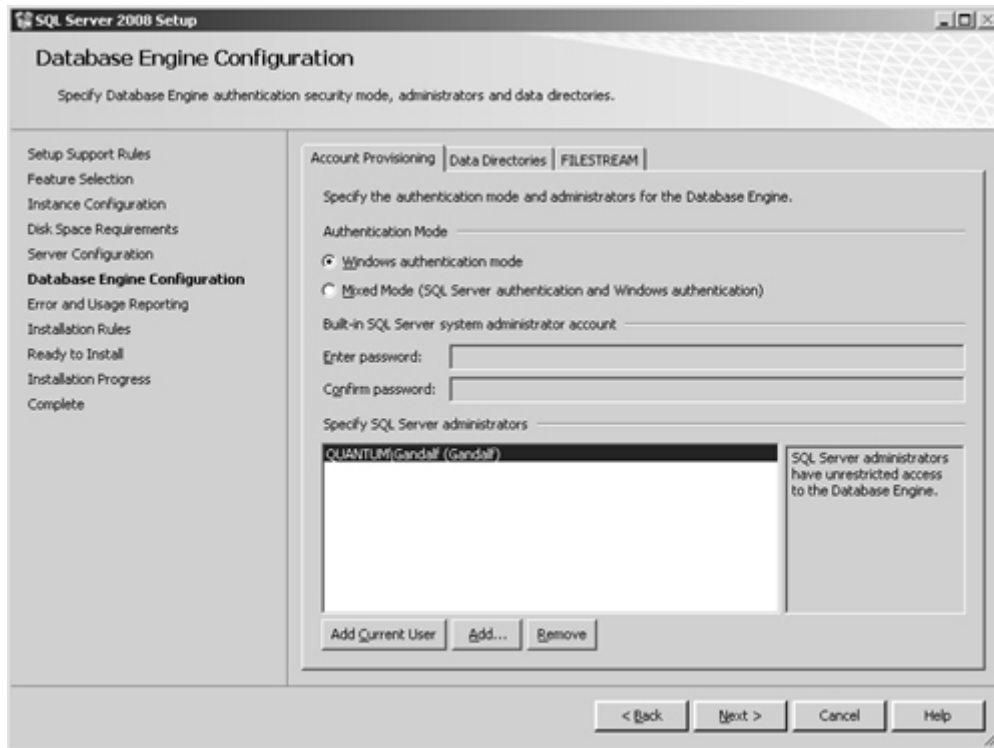


Of course, if you named your user account something other than SQL, specify the name you assigned to the account.

For the purposes of the book, you do not need to change the default choices in the Collation dialog box, but if you want to know more about collation, you can find details in [Chapter 2, "Single-Table Queries,"](#) in the section "[Working with Character Data.](#)"

14. Click Next to continue. The Database Engine Configuration dialog box appears.
15. On the Account Provisioning tab, ensure that under Authentication Mode the option Windows Authentication Mode is selected. Under Specify SQL Server Administrators, click Add Current User to assign the current logged-on user with the System Administrator (sysadmin) server role as shown in [Figure A-8](#). SQL Server administrators have unrestricted access to the SQL Server database engine.

Figure A-8. The Database Engine Configuration dialog box

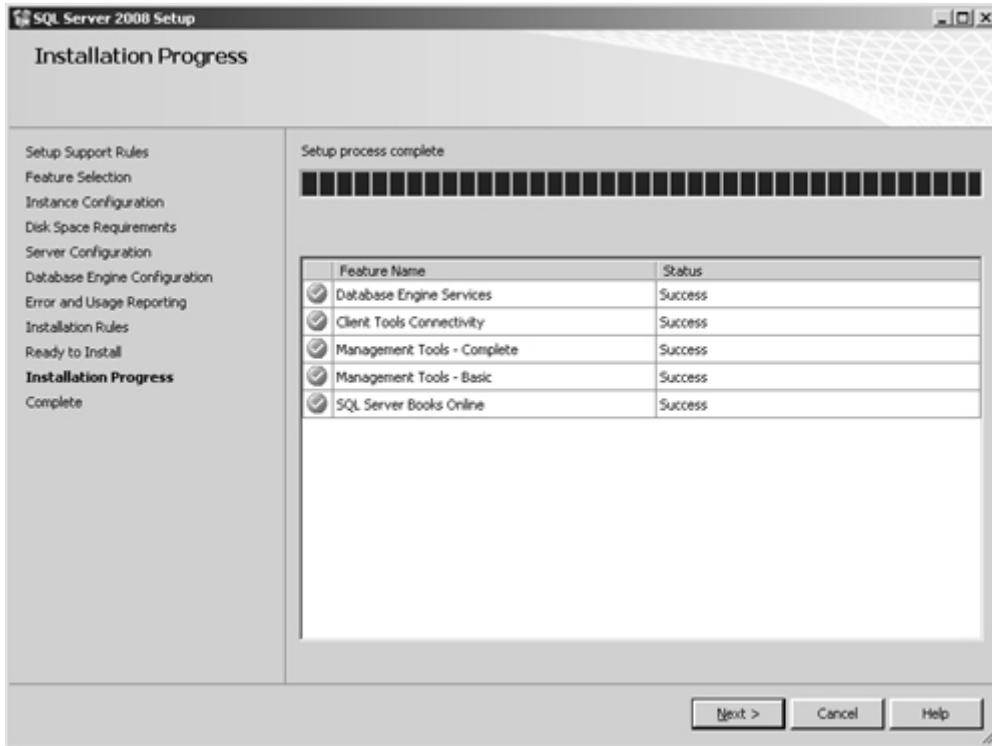


Of course, in your case your current user name will appear instead of QUANTUM\Gandalf.

If you want to change the setup program's defaults in terms of data directories you can do so on the Data Directories tab. For the purposes of the book, you don't need to configure anything on the FILESTREAM tab.

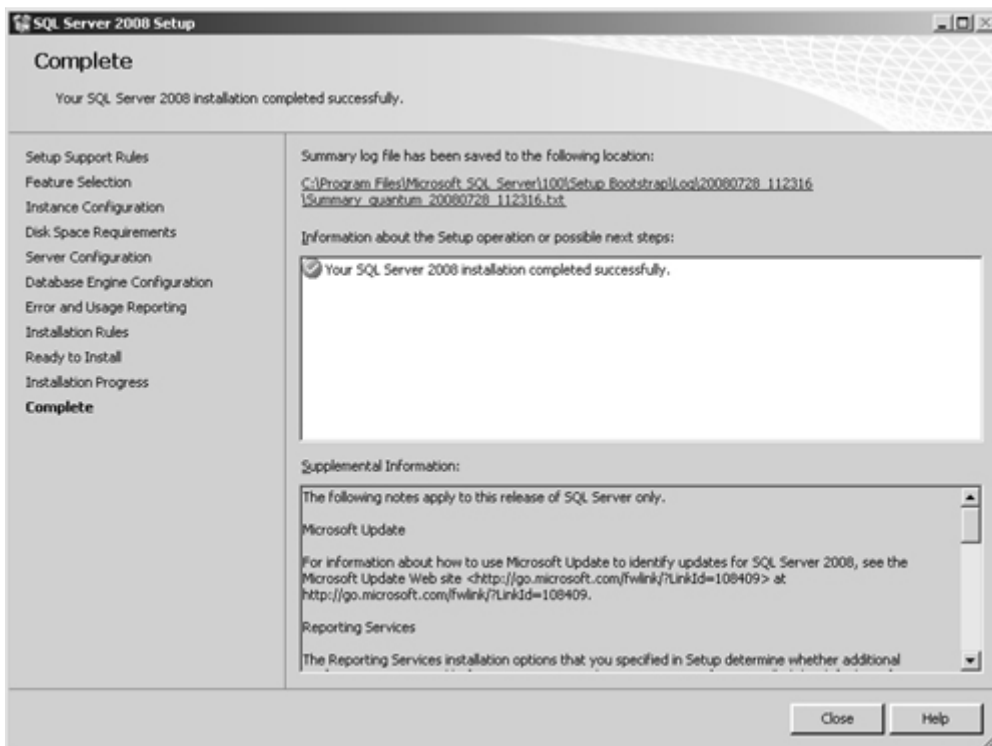
16. Click Next to continue. The Error And Usage Reporting dialog box appears. Make your choices based on your preferences and click Next to continue. The Installation Rules dialog box appears.
17. Click Show Details to view the status of the installation rules and ensure that no problems are indicated. Click Next to continue. The Ready To Install dialog box appears with a summary of the installation choices.
18. Ensure that the summary indicates your choices correctly and click Install to start the actual installation process. The Installation Progress dialog box appears and remains open throughout the remainder of the installation process. This dialog box provides a general progress bar as well as indicating the status of each feature that is being installed. When the installation is complete, a message saying Setup Process Complete appears above the general progress bar as shown in [Figure A-9](#).

Figure A-9. The Installation Progress dialog box



19. Click Next to continue. The Complete dialog box appears as shown in Figure A-10.

Figure A-10. The Complete dialog box



This dialog box should indicate the successful completion of the installation.

20. Click Close to finish.

